



# Malaysia

- **Malaysia Location Map** .....2
- **Malaysia Map – Langkawi / Tioman Location Map** .....3
  - **Presentation of Malaysia**..... 3
- **Langkawi Presentation - Cruising Area Limits**.....4
  - **Langkawi maps**.....4
- **Tioman Presentation - Cruising Area Limits**.....5
  - **Tioman maps**.....5

## MALAYSIA

### GENERAL AREA INFORMATION

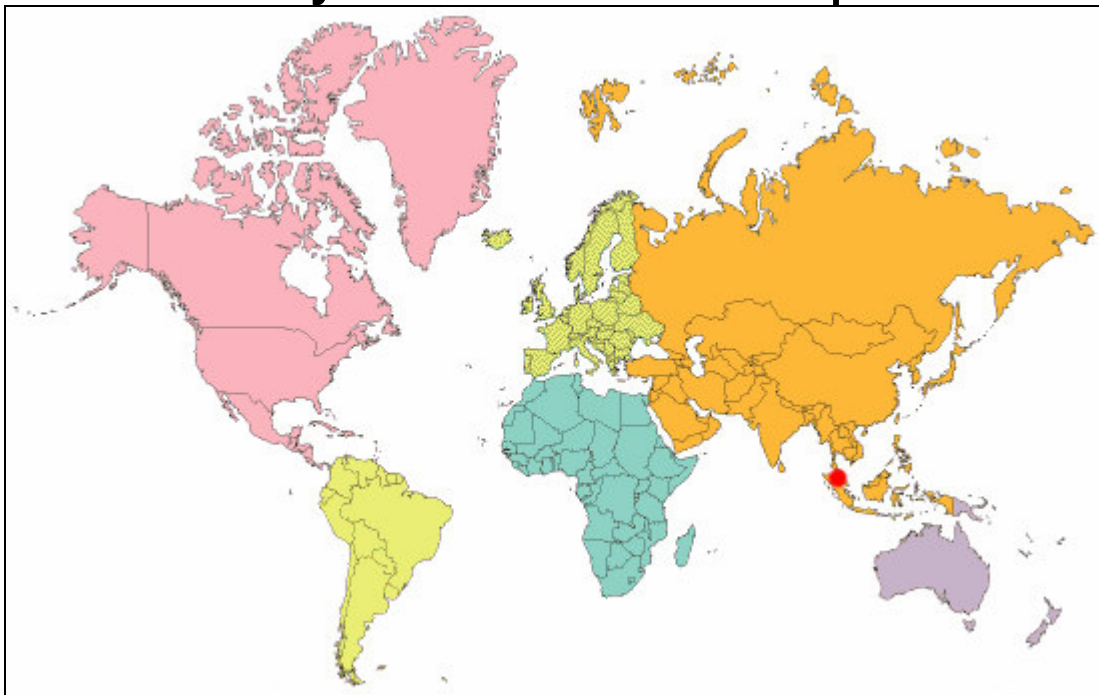
- Base Address .....6
- Malaysia key points .....6
- Time difference .....7
- Base .....7
- Sailing Experience Level .....7
- Yachts .....7
- Turnaround days & Embarkation & Disembarkation.....7
- Base Opening hours.....7
- Fuel and consumables .....7
- Options.....7
- Transfers & Airports..... 7-8
- Shore Facilities .....8
- Electricity.....8
- Telephone.....8
- Attractions & Activities .....8
- Provisioning.....8
- Currency .....9
- Passports & Visas .....9
- Health .....9
- Advice.....9
- Charts and Pilot Books.....9
- Climate and weather conditions .....9

### ITINERARIES

- Suggested bareboat itineraries .....10-13



# Malaysia Location Map





## Presentation of Malaysia

Malaysia has a great deal to offer the visitor and sailor, including a colourful culture, delicious food and very friendly people. The scenery is exquisite - spectacular coastline and beaches, tropical islands, emerald waters, beautiful scenery, and excellent sailing conditions.

Our cruising ground is the Andaman Sea, which includes the 99 islands which make up the Langkawi group and also takes in the southern Thai islands of the Butang group and Tarutao, which has always been one of most popular destinations.

Tioman is the biggest and most impressive island at the east coast. Tioman offers a wide range of activities for visitors: snorkelling in crystal clear water, discover the beautiful underwater world, or just laze on the beach. Also, there is a jungle on the island that is just begging to be explored. The dense forest is a habitat for many kinds of flora and fauna.

The client benefits from the way that the charters are organised, in that they are offered great flexibility in their charter periods.

## Presentation of Langkawi - Cruising Area Limits

Langkawi group of around 99 islands in the Andaman Sea and also takes in the southern Thai islands of the Butang group and Turatao up to Phuket.

For one way charters to Phuket the area is large, Penang is 80 miles south of Langkawi and is not in the cruising area but ferry services leave several times a day from Langkawi for clients wishing to visit the island. For Langkawi, charters there are several things to know:

1) Around Langkawi, shallow waters have some silt, meaning that diving and snorkelling around the main island is not great, whereas Butangs Islands (in Thai waters) are very nice. You can also dive in Malaysian waters at the Pulau Payar Marine Park 18nm south of Langkawi.

2) To reach the Butangs group clients will pay around 200RM per person and 250RM per boat for us to check them in and out. The Butangs are 28 miles away which is the same distance as Phi Phi is from our Thailand base. To check out, clients are required to hand over passports to base manager for at least two days (48 hours). Some clients don't like the idea of being without passports for two days and they are therefore unable to visit Thailand and go diving.

Guests on shorter charters up to 7 days should be made aware of the passport processing time if they want to cruise The Butang group.

Yachts are outside of our ability to assist with any problem quickly once they cross into Thai waters.

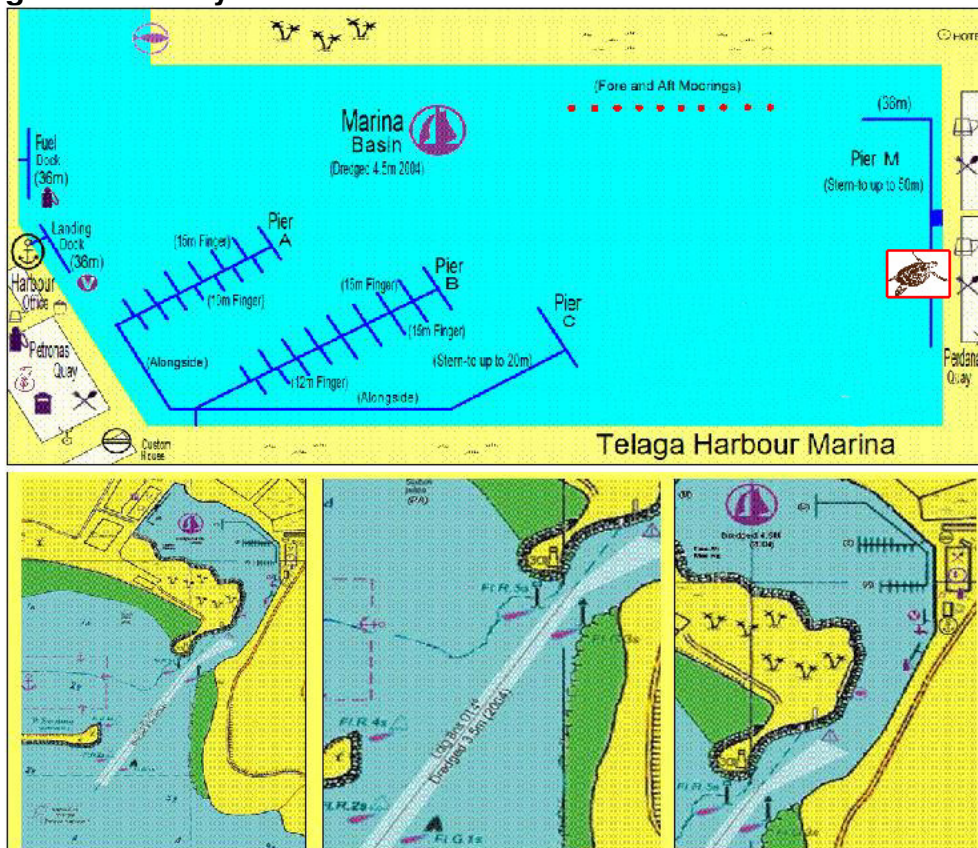
<http://www.telagaharbour.com/hotspot.htm>



### Langkawi marina Location



### Langkawi base layout



## Presentation of Tioman - Cruising Area Limits

About 56km off the coast of Pahang lies Tioman Island, an alluring holiday paradise in the South China Sea. Acclaimed as one of the best island getaways in the world, Tioman was the location of the Hollywood musical, 'South Pacific' in 1959.

According to legend, this island is the final resting place of a mythical dragon princess. The warm waters and good visibility make Tioman a paradise for divers. Discover astounding sights such as colourful Gorgonian sea fans, Staghorn corals, nudibranchs and beautifully sculptured sea sponges. Snorkellers can delight in swimming alongside huge Napoleon Wrasse, Golden Striped Trevally, Bumphead Parrotfish and shoals of Fusiliers.

This island is an idyllic spot for leisurely days under the sun. Swim in its emerald waters, enjoy a stroll by the beach or be lulled to sleep by the sound of the waves. There are several villages scattered around the coastline, the larger ones being Salang, Tekek, Genting, Paya and Juara.

Each village offers a different and unique atmosphere. Tioman's verdant greenery is home to a splendid variety of plants and small animals, including butterflies, monitor lizards, deer and monkeys. Its flora and fauna have been featured in National Geographic's documentaries.

The island's granite formations make for excellent rock-climbing expeditions. The more adventurous can attempt to scale the sheer cliff face of the legendary Gunung Nenek Semukut or Dragons Horns. Berjaya Tioman Beach, Golf & Spa Resort offers a luxurious stay amidst a backdrop of rolling hills and scenic views.

- **Cruising Limits Tioman:**

The sailing playground includes all the islands between Tioman and Aur, and the islands along the coast of Mersing.

### Tioman marina Location





## Dream Yacht Charter – Langkawi – Malaysia

### **Telaga Harbour Marina** ([www.telagaharbour.com](http://www.telagaharbour.com))

Dream Yacht MALAYSIA Sdn. Bhd.  
Lot G12, 1<sup>st</sup> floor  
Perdana Quay  
Telaga Harbour Park, Pantai Kok  
07000 LANGKAWI, Kedah Darul Aman.

**Base manager:** Jean-Emmanuel Massin:

mobile: +60 12 430 4650

Tel: +60 4956 1888

Fax: +60 4956 1889

e-mail: [malaysia@dreamyachtcharter.com](mailto:malaysia@dreamyachtcharter.com)

## Dream Yacht Charter – Tioman – Malaysia

### **Tekek Marina**

Tekek bay,  
Tioman island

**Base manager:** Jean-Emmanuel Massin:

mobile: +60 12 430 4650

Tel: +60 4956 1888

Fax: +60 4956 1889

e-mail: [malaysia@dreamyachtcharter.com](mailto:malaysia@dreamyachtcharter.com)

## Malaysia Overview

- **Malaysia key points**
  - ❖ **Easily accessible** (“many” flights from Europe)
  - ❖ **Natural destination**
  - ❖ **Cultural and wildlife richness**
  - ❖ **Great place for shopping and food discovers**
  - ❖ **Combinable land and sailing staying**
  - ❖ **Exotic change of scene**

Kuala Lumpur	Langkawi	“close interesting destinations”
Amazing shopping at amazingly low prices	Amazing beaches & deserted islands, unspoilt and full of wildlife	Cameron Highlands
Plenty to see & do	Good year-round sailing	Melaka
Quality hotels at bargain rates	World class resorts	Majestic mountains, fertile valleys, rushing rivers
Modern airport and transport systems	Incredible food	Close proximity to Singapore & Thailand
	Contrast between the numerous islands of archipelago (crystal waters, limestone, white sandy beaches)	East Malaysia Sabah: Sepilok Orangoutan Sanctuary. Sarawak: Iban tribes and Longhouses.

## GENERAL INFORMATION

- **Time difference**

GMT + 8 hours

- **Base**

**Langkawi:** The Dream Yacht Base is located in **Telaga Harbour Marina** about 20 minutes North-West of Langkawi International airport. Harbour is accessible at all states of the tide. There are facilities, bars & restaurants etc... (Water & electricity are available on the berths).

**Tioman:** The Dream Yacht Base is located in **Terek Harbour Marina** few hundred meters from the airport. Harbour is accessible at all states of the tide. There are facilities; Water & electricity are available on the berths.

- **Sailing experience Level**

Sailing conditions are not too hard. Sailors have to be cautious because of tides, exposure of certain moorings and sailing in open sea.

- **Yachts**

Dream Yachts have a range of yachts available for charter, mono hulls and catamarans either bareboat or cabin/crewed boats.

- **Turnaround days**

Embarkation and disembarkation are possible any day.

- ✓ Embarkation is at 5:00 PM
- ✓ Disembarkation is at 11:00 AM

- **Base opening hours**

Base is opened from 8:30 AM to 6:00 PM - 7 days a week.

- **Fuel and consumables**

All our yachts are delivered to you with full tanks of fuel (yacht & dinghy), full tank of water, 1 bottle of cooking gas in duty + 1 spare bottle. Yacht must be re-delivered with full tanks of fuel and water. If you choose our package, all starting consumables are included plus any re-fill of water at our Dream Yacht Charter Pontoon during your charter.

In **Tioman** Due to brand new infrastructure, no diesel and water station yet, base staff will take care of refilling water and diesel tanks and will charge the costs to customer.

- **Options**

***Included in charter fee***

- ◆ First & last night at the D.Y.C pontoon
- ◆ Autopilot
- ◆ GPS
- ◆ CD-player & cockpit speakers
- ◆ Dinghy & outboard engine
- ◆ 2 sets of linen, towels, beach towels per person/week
- ◆ Snorkelling gear
- ◆ Dream Yacht Charter Guarantee
- ◆ Final cleaning

***Available for extra fee***

- ◆ Skipper
- ◆ Steward / cook
- ◆ Guide
- ◆ Kayak
- ◆ Fishing rod
- ◆ Security insurance
- ◆ Transfers

- **Transfers and Airports**

**For Langkawi**

**By Plane**

Only a few direct flights are available. Most of them are making **1** or **2** stops. (Kuala Lumpur or Singapore).

From KUALA LUMPUR to Langkawi, frequent flight with Malaysian Airlines & "low cost company" **Airasia**. Beware with **Airasia** luggage surcharge when exceeding 15 kg.

**By Sea**

Langkawi Ferry operates daily between **Langkawi**, Kuala Kedah, Kuala Perlis, and Penang. as well as Thailand and Indonesia. ([www.langkawi-ferry.com](http://www.langkawi-ferry.com))

- **Transfers and Airports**

- **For Tioman**

- **By Plane**

- Berjaya Air operates daily direct 45-minutes flights to Tioman from Kuala Lumpur and Singapore.

- **By Sea**

- Tioman is accessible by boat from Tanjung Gemok in Pahang and Mersing in Johor. Journey time is approximately 1H30. It can also be reached by a 4-hour ferry ride from the Tanah Merah Ferry Terminal in Singapore.

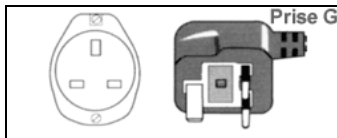
- **Shore facilities**

- **Langkawi.** There are restaurants and nice hotels not too far from the base which can be combined for land staying. The following facilities are available at the base: Telephone and fax, showers and toilets.

- **Tioman.** The following facilities are available at the base: Telephone and fax, showers and toilets.

- **Electricity**

- Voltage is 220V - 50Hz (and the plug type is G)



- **Telephone**

- Area code:

- - From Europe to Malaysia for a home telephone: 00 60 + correspondent N°
    - - From Europe to Malaysia for a Cellular phone: 00 60 + correspondent N°
    - - From Malaysia to France 00 33 + correspondent N° (without "0" after 33)

- **Attraction and activities – Langkawi area**

- ✓ Langkawi cable car with 360 degrees views of Langkawi and the surrounding islands.
        - ✓ Padang Mat Sirat - Field of Burnt Rice
        - ✓ Telaga Tujuh - 7 Wells at the foot of a 100 ft waterfall
        - ✓ Crocodile Farm
        - ✓ Atma Alam Batik, Design your own prints and wear them.
        - ✓ Canopy Tours, Abseiling and rope walks through the jungle. Informative and fun.
        - ✓ Pulau Dayang Bunting - The Lake of the Pregnant Maiden
        - ✓ Pulau Singa Besar Sanctuary - forest park, animal and bird sanctuary

- **Attraction and activities – Tioman area**

- ✓ West coast of Tioman is a series of beautiful white sand beaches and crystal waters.
        - ✓ Nice strolls are possible in the mountains (jungle, Waterfalls, etc...).
        - ✓ Golf course.
        - ✓ Diving spots
        - ✓ Coral island, Seribuat, Rawa
        - ✓ Sib, Tinggi, Pemmangil, Aur (Hesar islands group)

- **Provisioning**

- We recommend at least to provision with basic products. It's easier to make it before departure as most of meals will be taken on board even though crew can go ashore for dinners.

- **Currency**  
Local currency is Ringgit (1 euro is roughly 5 Ringgit) - Credit cards are accepted in the shops / there are cash dispensers – Visa Card, Eurocard, American Express and Diners Club are accepted in mall and hotels. One recommends bringing a “mix” of cash and traveller checks.
- **Passport and Visas**  
No specific visa required for most of nationalities - A valid (for at least 6 months) passport is compulsory.
- **Religion**  
Muslim
- **Language**  
Bahasa Malayu – Malais (and English is widely spoken).  
Few Malay words: Selamat pagi = good morning // Selamat petang = good evening // Selamat datang = welcome // Selamat tinggal = good bye // Terima kasih = thank you // Maafkan saya = excuse me.
- **Health**  
No vaccines compulsory for European travellers.  
- If you are under treatment, it will be hard to find a pharmacy after leaving the airport.  
- Bring along with you the necessary pills or drugs quantity.  
- Keep your vital pills or drugs with you in your hand luggage (in case of luggage losses).  
- Plan a mosquito repellent and a first aid kit.  
Even if you can easily stand the sun, it’s much harder on a boat than on the land because of reverberation. Smooth breeze, avoid feeling the heat and you get sun burnt before noticing it. One recommends having a cap and sun glasses. A good solar cream is necessary at least for first days.
- **Advice**  
Before entering in temples or Mosques take off shoes and even though taking pictures is allowed but one recommends asking for it before. Take only soft bags - No suite case (rigid suite cases are too cumbersome on a boat). There are no special habits for tips, but one can give.
- **Diving**  
Diving can be arranged locally upon request.
- **Charts and pilot books**  
The Andaman Sea Pilot 2007 edition
- **Malaysia climate and weather conditions**  
It’s a tropical climate average between 21° and 32°.
  - Langkawi is an ALL YEAR ROUND sailing destination. There are two main seasons, which are called the wet and dry season, or the SW or NE monsoon, respectively. Seasons tend to be predictable, although there may be inconsistencies as they change from one to the other.
  - Tioman Best period is between April to October (contrary to Phuket), few rain, clear sky. Winds are from South-East, average of 15 Knots. However, winds are parallel to the coast, so cruises often require sailing close to the wind or on the quarter. Sometimes in the evening, west squalls (20 to 40 knots), are sprinkling moorings located west sides of islands (protected from South-East winds), but it’s more rare these last years.



## ITINERARIES

- Suggested itineraries**

1 Week cruise – Langkawi / Langkawi		
Day	Destination	Distance (NM)
1	Langkawi - Pulau Tepur	
2	Pulau Tepur – Pulau Dayang Bunting	
3	Pulau Dayang Bunting - Pulau Payar	
4	Pulau Payar - Kuah Town	
5	Kuah Town - Pulau Dendang - Natural park of Kilim	
6	Natural park of Kilim - Tanjung Rhu Beach	
7	Tanjung Rhu Beach - Baie de Datai – Telaga Marina	





14 days Cruise – Langkawi / Langkawi		
Day	Destination	Distance (NM)
1	Langkawi (Telaga marina)	
2	Pulau Tepur - Pantai Cenang	7
3	Pulau Tepur - Pantai Cenang – Pulau Dayang Bunting	7
4	Pulau Dayang Bunting - Kuah Town	11
5	Kuah Town - Kilim Natural Park	15
6	Tanjung Rhu Beach - Datai	19
7	Datai – Langkawi (Telaga marina)	10
8	Langkawi (Telaga marina) - Ko Lipeh	25
9	Ko Lipeh	
10	Ko Lipeh - Ko Adang	5
11	Ko Adang - Ko Rawi	5
12	Ko Rawi - Ko Butang islet	3
13	Ko Butang islet - Langkawi (Telaga marina)	32
14	Langkawi (Telaga marina)	





14 days One WayCruise – Langkawi / Phuket		
Day	Destination	Distance (NM)
1	Langkawi (Telaga marina) - Pantai Cenang	
2	Pantai Cenang- Dayang Bunting	
3	Dayang Bunting to Kilim River	
4	Kilim River To Datai Bay	
5	Datai Bay to Ko Lipe (Thailand)	
6	Ko Lipe – Ko Adang	
7	Ko Adang – Ko Rok	
8	Ko Rok	
9	Ko Rok to Ko Muk	
10	Ko Muk to PhiPhi	
11	PhiPhi to Krabi	
12 - 13	Krabi to Phang Nga Bay	
14	Phang Nga Bay – Phulet base	





1 Week cruise – Tioman / Tioman		
Day	Destination	Distance (NM)
1	Tioman - Coral island	23
2	Coral island – Pulau Seribuat/Pulau Sembilang	25
3	Pulau Harimau – Pulau Rawa – Pulau Tengah	15
4	Pulau Tinggi - Pulau Sibul	20
5	Pulau Sibul - Pulau Aor	17
6	Pulau Aor – Pulau Pina	27
7	Pulau Pemanggil - Tioman	34

